



Trusted
Property Experts



Larchwood Road
Exhall CV7 9GD

Larchwood Road

CV7 9GD

****NEWLY REFURBISHED TWO BED BUNGALOW OFFERED WITH NO UPWARD CHAIN****

A superbly presented two-bedroom semi-detached bungalow situated in the ever-popular area of Larchwood Road, Exhall. The bungalow has been refurbished to a very high standard and must be viewed internally to appreciate the quality of finish this property has to offer.

Briefly the accommodation comprises of a hallway with doors leading off to a lounge with a feature gas fire place and sliding doors leading out to the garden, a newly fitted kitchen with an integrated oven, electric hob, fridge/freezer, dishwasher and space for a washing machine. There are two double bedrooms and a newly fitted bathroom with a walk-in shower.

To the front of the property is a block paved driveway and to the rear is a fully enclosed well established garden.

selling quality
property since 1995

Custom text box





Custom text box





Dimensions

GROUND FLOOR

Entrance Hallway

Living Room

5.13m x 3.45m

Kitchen

2.18m x 2.72m

Bedroom One

3.40m x 2.97m

Bedroom Two

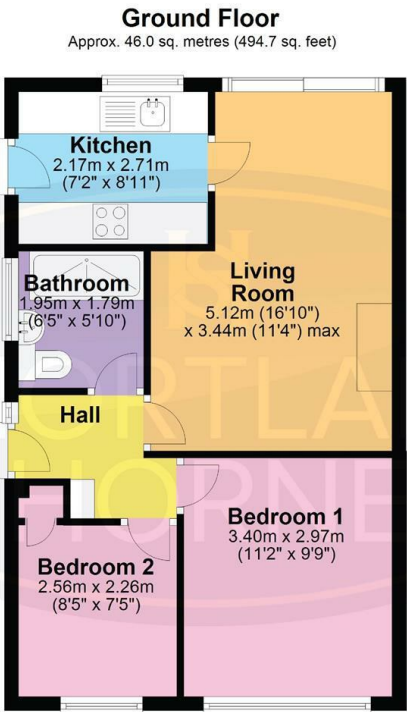
2.57m x 2.26m

Bathroom

1.96m x 1.78m



Floor Plan



Total area: approx. 46.0 sq. metres (494.7 sq. feet)

DISCLAIMER - Floor plans shown are for general guidance only. Whilst every attempt has been made to ensure that the floorplan measurements are as accurate as possible, they are for illustrative purposes only.

Total area: 494.70 sq ft

Disclaimer

Services All main services are understood to be available. Prospective purchasers are however recommended to verify connection with the appropriate suppliers.

Fixtures and Fittings Excluded unless referred to in the sale particulars. Photographs are for illustrative layout purposes only and items shown are not included unless specifically mentioned in contract documentation. Please note: wide angle lens photography may be used, in certain instances, sometimes resulting in slight distortion.

Viewing Strictly by arrangement through Shortland Horne.

Measurements Room measurements and floor plans are for guidance purposes only and are approximate.

Purchase Procedure It is essential to contact our offices before applying for a mortgage or arranging for a survey on this or any other Shortland Horne property to confirm current availability.

Money Laundering We have in place procedures and controls, which are designed to forestall and prevent Money Laundering. If we suspect that a supplier, customer/client, or

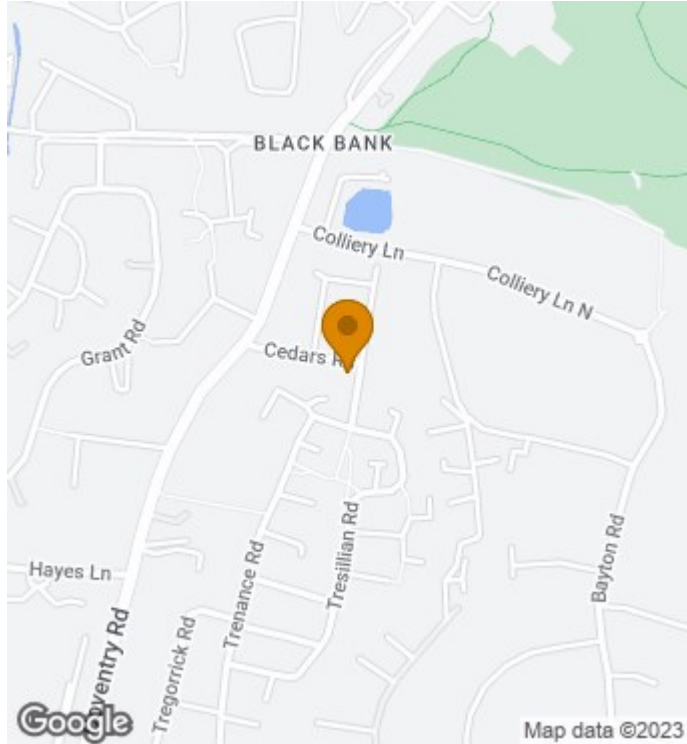
employee is committing a Money Laundering offence as defined by the Proceeds of Crime Act 2002, we will in accordance with our legal responsibilities disclose the suspicion to the National Criminal Intelligence Service. Intending purchasers will be asked to produce identification documentation at a later stage and we would ask for your co-operation in order that there will be no delay in agreeing the sale.

Appliances We would ask that you note that the property may contain appliances that would warrant checking for satisfactory working condition and you may wish to arrange this at your own expense prior to legal commitment.

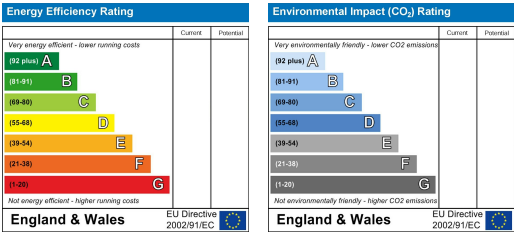
Referrals If Shortland Horne have introduced you to a Solicitor, Mortgage Advisor or Surveyor with whom we have a business relationship we are required by the Code of Conduct published by the NAEA propertymark to notify you that we will receive a referral fee. The fee for these services will vary depending on the transaction and intermediary may make to attract business.

Shortland Horne's Mortgage Advisor is Midland Financial Planning Limited, a partner practices of St. James's Place. For referring business to Midland Financial Planning Limited Shortland Horne will receive up to 50% of any commissions earned. You do not have to use the service of any of our providers and can choose to source the service from someone else. Any advice that is provided will be independent.

Location Map



EPC



02476 222 123

sales@shortland-horne.co.uk

shortland-horne.co.uk

@ShortlandHorne

Shortland-Horne

Trusted
Property Experts